

design notes

THE DETAILS THAT MAKE THE LOOK

A GUEST ROOM'S YANNICK LESBATS BED IS CURTAINED IN WARNER HOUSE'S TREE OF LIFE, WHICH ALSO COVERS THE WALLS.



“The house is far from the road, isolated from the noise. Everywhere we look is green.” —*Pierre Sauvage*



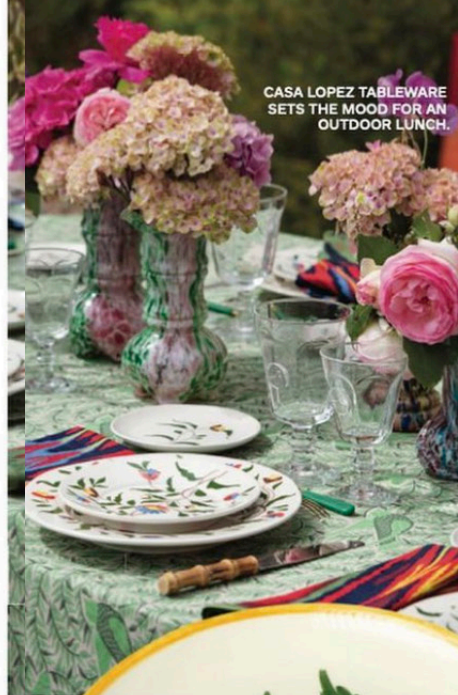
18TH-CENTURY FRENCH AUBUSSON VERDURE TAPESTRY; \$38,000. 1STDIBS.COM



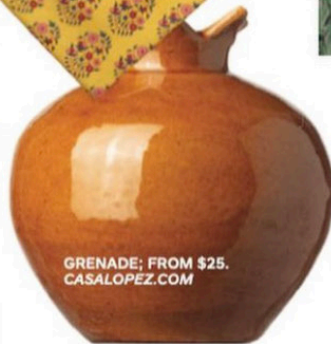
SIGNATURE SOFA; FROM \$6,835. GEORGESMITH.COM



ONDINA NAPKINS; \$25 EACH. CASALOPEZ.COM



CASA LOPEZ TABLEWARE SETS THE MOOD FOR AN OUTDOOR LUNCH.



GRENADE; FROM \$25. CASALOPEZ.COM



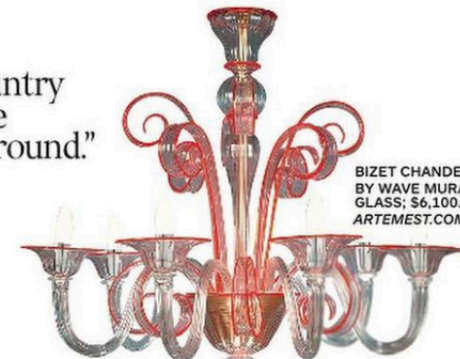
FALINE BED; FROM \$6,150. OLYSTUDIO.COM



STRAWBERRY BREAD PLATE; \$16. CASALOPEZ.COM

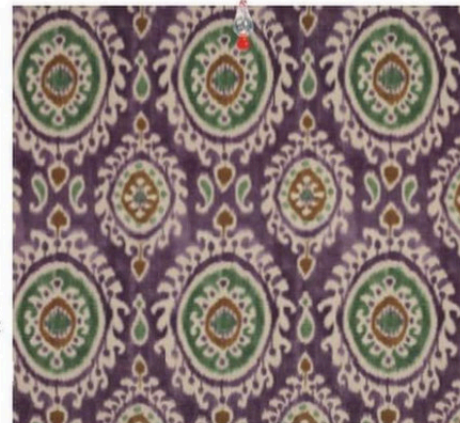


BAMBOO FLATWARE; \$150 FOR A FIVE-PIECE PLACE SETTING. AERIN.COM



BIZET CHANDELIER BY WAVE MURANO GLASS; \$6,100. ARTEMEST.COM

MADINA LINEN BY MANUEL CANOVAS; TO THE TRADE. COWTAN.COM



CARMINA RUG; \$1,986. CASALOPEZ.COM



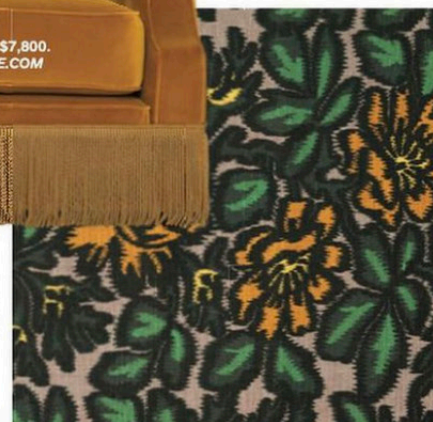
CADAQUES NIGHTSTAND; \$2,135. CASALOPEZ.COM



ATLANTA CHAIR; \$7,800. ORIORFURNITURE.COM



CHANDIGARH LAMP SHADE; \$228. CASALOPEZ.COM



IKAT GARDEN FABRIC; \$140 PER METER. CASALOPEZ.COM

INTERIORS: AMBROISE TÉZENAS. ALL OTHERS COURTESY OF THE COMPANIES.

“It’s a real country house where he could live year-round.” —*Louis Benech*



A GUEST BATH IS SWATHED IN MADINA BY MANUEL CANOVAS. THE CUSTOM RUG MIMICS THE PATTERN.